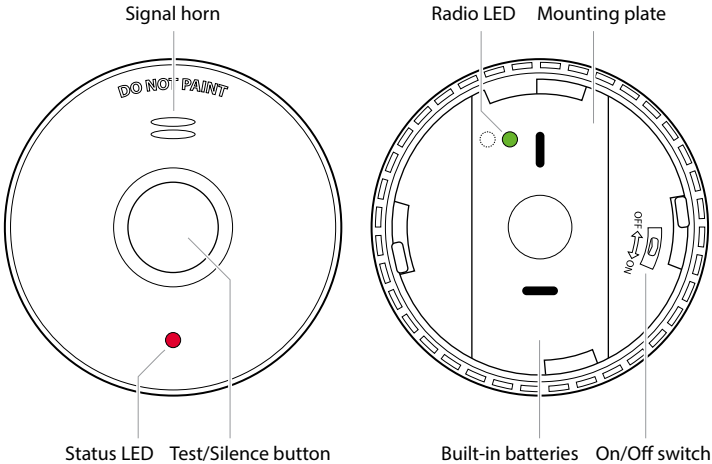


AS 3786:2014



BE1289 SMOKE ALARM

Overview



Read this first. Thank you for purchasing this Visit smoke alarm which is an important part of the Visit alerting system from Bellman & Symfon. Read and keep this user manual for as long as the product is being used. It contains vital information on the operation and installation of your smoke alarm. The user manual should be regarded as part of the product. If you are just installing the unit, the user manual must be given to the householder. The user manual is to be given to any subsequent user.

Contents

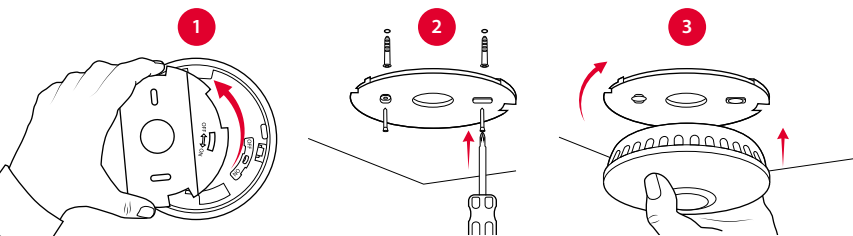
Getting started	4
Using interconnection	6
Location and positioning	8
Fire safety advice	11
Alarm limitations	13
Radio module features	14
Test and maintenance	15
Troubleshooting	17
Technical specifications	18
Warranty conditions	19

Note: This smoke alarm is equipped with a radio module that transmits radio signals to one or more supplementary Visit receivers. The Visit receivers help hard of hearing and deaf people to notice the alarm. The characteristics of the alarms are explained in the Visit receiver's user manual.

Getting started

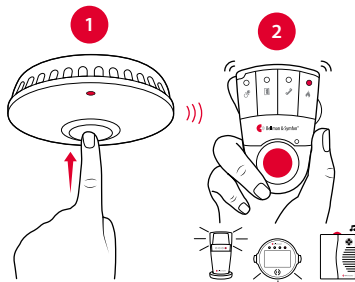
Installation

- 1 Remove the mounting bracket from the smoke alarm by turning it counter-clockwise.
- 2 Taking care to avoid any electrical wiring, fix the mounting bracket to the ceiling or wall using the supplied screws and plugs. For placement, see 'Location and positioning'.
- 3 Fit the smoke alarm to the bracket by turning it clockwise until it snaps into place. The status LED blinks in red every 40 s to show that the unit is on.



Testing

- 1 Press the test button on the smoke alarm and release it when the unit starts to beep.
 - 2 The red Visit LED blinks on the receiver and it starts to sound, flash or vibrate depending on your receiver. It will time out in about 40 s.
- If you have interconnected smoke alarms (see page 6), they will beep for 10 s and blink for 5 min. To mute them, press the test button on each unit.



Signal pattern

The smoke alarm status LED blinks in red every 40 s to show that it is working correctly. Depending on the cause of the alarm, the signal patterns are as follows:

Smoke alarm			Visit receiver			
Cause	Status LED	Sound	LED	Sound	Vibration	Flash
Fire/Test	Blinks every s	3 beeps every 4 s	Red	Fire alarm	Long	Yes
Low battery	Blinks every 40 s	Chirps every 40 s	—	—	—	—
Faulty unit	—	Chirps every 40 s	—	—	—	—

Silence function

In case of a nuisance alarm, press the test button to silence it temporarily. The status LED blinks every 8 s to confirm. For security reasons, the silence function stops after 10 minutes.

Note: Only use this feature if you are certain about the cause of the alarm, like for instance harmless cooking fumes. If you have interconnected smoke alarms, you need to silence the unit that blinks to stop the other units from sounding. If more than one unit is blinking, you need to silence each smoke alarm separately.

Test interval

It is recommended that you test your smoke alarms and Visit receivers at least weekly to ensure the units are working, see 'Test and maintenance'.

Power monitoring

When the battery starts to run out, the smoke alarm chirps and blinks every 40 s for a minimum of thirty days. This smoke alarm features a sealed non-replaceable battery, so when the battery is depleted you need to replace the unit, see 'End of life'.

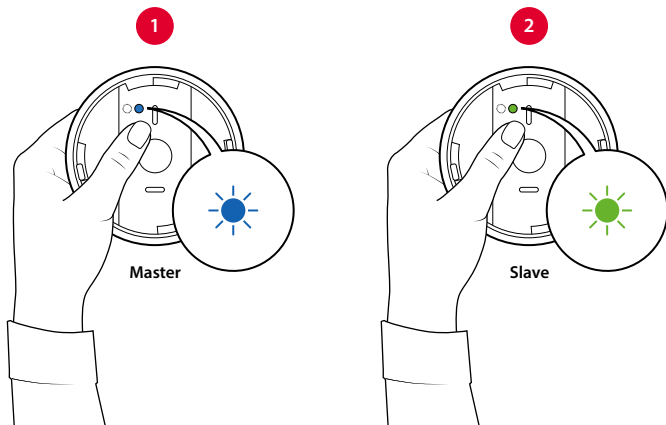
Using interconnection

To interconnect your smoke alarms:

Start by selecting one of the smoke alarms that will function as the **master** unit. The other alarms will function as slave units. Make sure all mounting brackets are fitted.

- 1 Press the test button 3 times in quick succession on the selected master unit. The radio LED on the back of the unit lights up in blue when it starts to transmit the pairing signal.
- 2 Press the test button 3 times in quick succession on one of the **slave** units. The radio LED on the back of the unit lights up in green when it has received the pairing signal. Repeat this step to interconnect your other slave units.

Note: The master unit will timeout after 1 minute. Press the test button 3 times in quick succession to exit and return to normal mode manually.

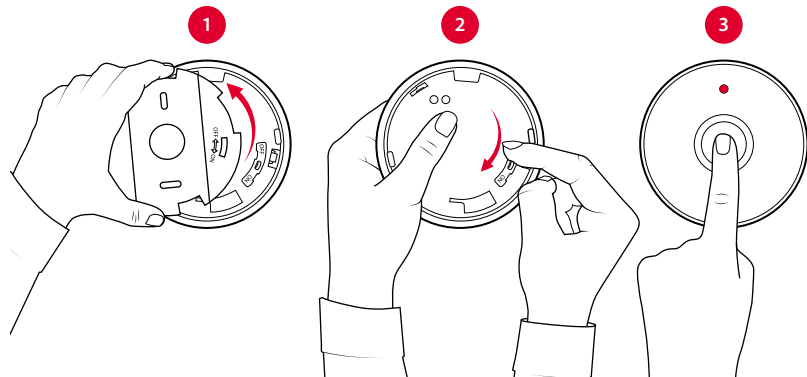


To test the interconnection:

- 1 Hold down the test button on the smoke alarm that is located farthest away from the other units. Release the button when the smoke alarm starts to blink and chirp.
- 2 After a short delay, the interconnected smoke alarms will beep for 10 seconds and blink for 5 minutes to confirm. To mute them, press the test button on each unit. If it doesn't work, see the 'Troubleshooting' section.

To clear the interconnection:

- 1 Remove the mounting bracket by turning it counter-clockwise to turn off the smoke alarm.
- 2 Hold down the test button as you turn on the unit by moving the switch clockwise. Continue to hold down the test button until the red status LED on the front of the unit goes out.
- 3 Press the test button again. The status LED will start to blink in red to show that it is deleting the interconnection. When the status LED goes out, the interconnection is cleared.



Location and positioning

Locating your smoke alarm

For maximum protection we strongly recommend that you install a smoke alarm in every room (except bathrooms and kitchens). Research indicates that substantial increase in warning time can be obtained with each properly installed additional smoke alarm. The minimum level of coverage is one per floor or one outside each sleeping area, however, we suggest that you follow the guidelines below.

Single storey dwellings

For the minimum level of protection in a single storey dwelling, such as flat or bungalow, the smoke alarm should be located between the sleeping area and the living area. See **Figure 1** for an example. This means that the alarm is near the most likely source of a fire, i.e. living rooms and kitchens. It is important to ensure that the alarm in this location is loud enough to wake people sleeping in the bedrooms.

Single storey dwellings with more than one sleeping area should have an alarm located outside each area. If a hallway is longer than 30 feet, one alarm will not be sufficient.

Figure 1

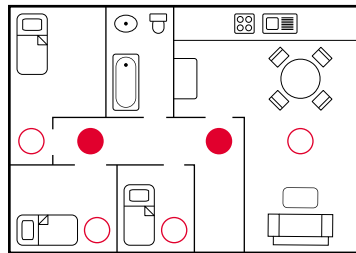
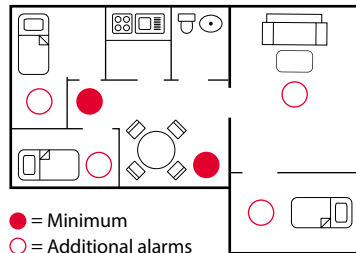


Figure 2



A smoke alarm should be located at each end. See **Figure 2** for an example.

Multi-storey dwellings

For the minimum level of protection in a multi-storey dwelling, smoke alarms should be placed on the ground floor near the stairs (this will detect smoke from a fire in the kitchen or living room before it reaches the upstairs landing and bedrooms) and on the upstairs landing (to detect smoke from a fire in a bedroom).

For maximum protection, a smoke alarm should be placed in every room except kitchens and bathrooms. Particularly when:

- 1 Bedroom doors are kept shut at night. An alarm in the hallway may not wake the occupant through a closed door.
- 2 Rooms contain electrical appliances such as heaters or electric blankets.
- 3 Bedrooms are occupied by smokers.
- 4 Rooms are occupied by persons who may not be able to respond very quickly, such as the elderly or young children.

Important: This smoke alarm is only suitable for individual household units and not for multi occupancy blocks, commercial or industrial use.

Positioning your smoke alarm

Once the most suitable location has been found, the smoke alarm must be positioned where it will be most effective. A central ceiling position is the most suitable for the alarm as smoke rises and spreads out. If this is not possible, the alarm can be mounted on the wall. The area around the corner of the ceiling is dead air space where the air does not move, so do not position the alarm on the ceiling closer than 30 cm (12") from the wall, and on the wall place the alarm at least 10 cm (4") but no further than 30 cm (12") from the ceiling. See **Figure 3** for an example.

When installing the alarm in a room with a sloped or peaked roof, position it at least 50 cm (20") but no further than 100 cm (40") from the apex as dead air may prevent smoke from reaching the unit. See **Figure 3** for an example.

Figure 3

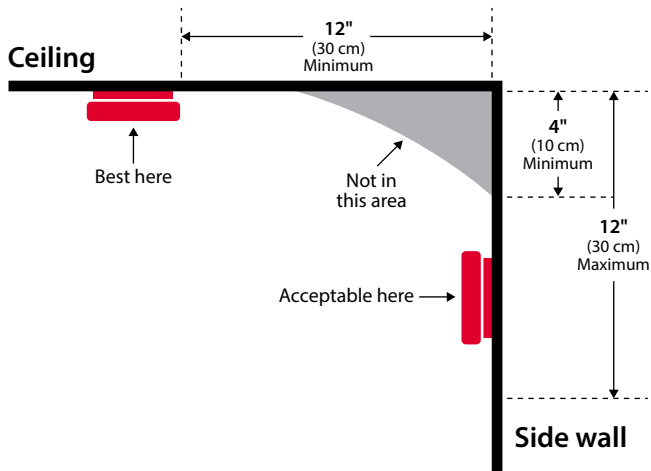
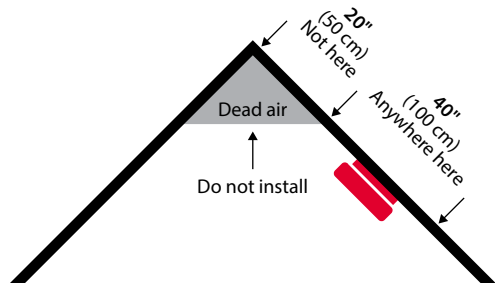


Figure 4



Fire safety advice

When using household protective devices, basic safety precautions should always be followed, including those listed below.

- Please read all instructions.
- Rehearse emergency escape plans so everyone at home knows what to do in case the alarm sounds.
- Use the smoke alarm test button to familiarize your family with the alarm sound and to practice fire drills regularly with all family members. Draw up a floor plan that will show each member at least 2 escape routes from each room in the house. Children tend to hide when they don't know what to do. Teach children how to escape, open windows, and use roll up fire ladders and stools without adult help. Make sure they know what to do if the alarm goes off.
- Constant exposures to high or low temperatures or high humidity may reduce battery life.
- Nuisance alarms can be quickly silenced by fanning vigorously with a newspaper or similar to remove the smoke or press the test/hush button.
- Do not attempt to remove, recharge or burn the battery, as it may explode.
- If it is necessary to remove the battery for separate disposal, handle carefully to avoid possible eye damage or skin irritation if battery has leaked or corroded.
- To maintain sensitivity to smoke, do not paint or cover the smoke alarm in any manner; do not permit any accumulation of cobwebs, dust or grease.
- If the smoke alarm has been damaged in any way or does not function properly, do not attempt a repair. Get your smoke alarm serviced, see the Service and support section.
- This appliance is intended ONLY for premises having a residential type environment.
- This is not a portable product. It must be mounted following the instructions in this leaflet.
- Smoke alarms are not a substitute for insurance. The manufacturer is not your insurer.

Fire safety hints

- Store petrol and other flammable materials in proper containers.
- Discard oily or flammable rags.
- Always use a metal fireplace screen and have chimneys cleaned regularly.
- Replace worn or damaged sockets, switches, home wiring and cracked or frayed electrical cords and plugs.
- Do not overload electrical circuits.
- Keep matches away from children.
- Never smoke in bed. In rooms where you do smoke, always check under cushions for smoldering cigarettes and ashes.
- Service central heating systems regularly.
- Be sure all electrical appliances and tools have a recognized approval label.

This device cannot always protect all persons. It may not protect against the three most common causes of fatal fires:

- 1 Smoking in bed.
- 2 Leaving children at home alone.
- 3 Cleaning with flammable liquids, such as petrol.

Further information can be obtained from the fire department.

Planning your escape route

- 1 Check room doors for heat or smoke. Do not open a hot door. Use an alternate escape route. Close doors behind you as you leave.
- 2 If smoke is heavy, crawl out, staying close to floor. Take short breaths, if possible, through a wet cloth or hold your breath. More people die from smoke inhalation than from flames.

- 3 Get out as fast as you can. Do not stop for packing. Have a prearranged meeting place outside for all family members. Check everybody is there.
- 4 Call the fire brigade from a neighbor's house or mobile phone. Remember to give your name and address.
- 5 **NEVER** re-enter a burning house

Alarm limitations

Limitations of smoke alarms

Smoke alarm are designed to provide the earliest possible warning of a fire, and can provide valuable time to escape. They do, however, have limitations.

- They will not work without power, i.e. if the alarm does not contain a battery or the battery is simply dead. Constant exposures to high or low temperatures or high humidity may reduce battery life. Prolonged periods of alarms will also reduce battery life.
- This type of smoke alarm can only detect smoke and combustion particles in the air. It does not sense heat, flame, or gas. The alarm will only sound once smoke has entered the sensing chamber. Anything that prevents smoke reaching the detector may delay or prevent the alarm from sounding. Smoke from fires in chimneys or walls, on roofs or the other side of closed doors may not be detected unless a significant amount of smoke reaches the alarm. Smoke alarm should therefore be installed in every room or at least on every floor of your home.
- Smoke alarms cannot always be heard. Smoke alarms sounding the other side of a closed door or on another floor may not wake a sound sleeper, and may not be heard over other noise, such as traffic, the TV or radio. Smoke alarms may not be heard by persons who are hard of hearing.
- Smoke alarms have a limited life. The manufacturer recommends that the alarm should not be used for more than 10 years.
- This smoke alarm is not a substitute for personal or property insurance. Appropriate insurance cover is your responsibility. Please consult your insurance agent.

Radio module features

This smoke alarm is equipped with a radio module that:

- Transmits radio signals to up to 40 interconnected smoke alarms.
- Transmits radio signals to one or several supplementary Visit receivers. A Visit receiver will help hard of hearing and deaf people to notice the alarm. The alert type and signal pattern for the Visit receiver is found in the product's user manual.

Radio channel/key

This smoke alarm transmits on a fixed radio channel/radio key. So, no matter what radio key your Visit receiver is set to, it will respond to the alarm if it's within radio range.

Radio range

The operation range between a smoke alarm and an interconnected unit or Visit receiver is over 100 m free field but is influenced by the thickness of the walls and the wall materials in the house or apartment. The range will also be reduced if the smoke alarm battery level is low. Check that the Visit receivers and interconnected units responds to the smoke alarm signal everywhere in the house or apartment. The bedroom is most important.

Signal pattern – interconnected units

Depending on the cause of the alarm, the interconnected smoke alarms will signal as follows:

Interconnected smoke alarms

Cause	Status LED	Sound
Alarm	—	Chirps twice every s
Low battery	Blinks once every 3 h	Chirps once every 3 h
Test	Blinks twice every s	Chirps twice every s

Test and maintenance

Your smoke alarm is a life saving device and should be tested periodically. Regularly check that the red LED on the smoke alarm blinks every 40 s to show that the unit is powered.

Testing your smoke alarms

It is recommended that you test your smoke alarms after installation and then at least weekly to ensure the units are working.

- Press and hold the test button until the alarm sounds. If there is no sound, the battery, horn or circuitry could be defected, please read the 'Troubleshooting' section for advice.
- If you have interconnected smoke alarms, they will sound for 10s and blink fast for 5 min. To mute them, press the test button on each unit.
- If the smoke alarm is connected to a supplementary Visit receiver, check and make sure that the Visit receiver reacts too. See the 'Quick start guide' section and the Visit receiver user manual. The Visit receiver will stop signalling within 40s.
- Repeat this procedure for all non-interconnected smoke alarms in the system.

Warning: Do not test with an open flame. You could damage the alarm or ignite combustible materials and start a fire. When you press the test button it simulates the effect of smoke in a smoke alarm which it could experience in a real fire. So, there is no need to test smoke alarms with smoke or flame.

Cleaning your smoke alarm

Clean your smoke alarm regularly. Use a soft bristle brush or the brush attachment of your vacuum cleaner to remove dust and cobwebs from the side slots where the smoke enters. To clean the cover, wipe with a damp cloth and dry thoroughly.

Important: Do not attempt to remove the cover to clean the inside. This will affect warranty.

Warning: Do not paint your smoke alarm. Other than the maintenance and cleaning described in this leaflet, no other customer servicing of this product is required. Repairs, when needed, must be performed by the manufacturer.

Dust and insect contamination

All smoke alarms and particularly the optical (photoelectric) type are prone to dust and insect ingress which can cause false alarms.

The latest design, materials and manufacturing techniques have been used in the construction of this Bellman & Symfon smoke alarm to minimize the effects of contamination. However, it is impossible to completely eliminate the effect of dust and insect contamination, and therefore, to prolong the life of the smoke alarm you must ensure that it is kept clean so that excess dust does not build up. Any insects or cobwebs in the vicinity of the smoke alarm should be promptly removed.

In certain circumstances even with regular cleaning, contamination can build up in the smoke sensing chamber causing the smoke alarm to sound. If this happens the smoke alarm must be returned for servicing or replacement. Contamination is beyond our control; it is totally unpredictable and is considered normal wear and tear. For this reason, contamination is not covered by the warranty and a charge is made for all such servicing work.

End of life

When the battery starts to run out, the smoke alarm chirps and blinks every 40 s for a minimum of thirty days.

Warning: *The smoke alarm features a sealed non-replaceable battery. When the battery is depleted you need to replace the unit.*

Important: *10 years after the installation, the entire smoke alarm must be replaced. Check the 'replace by' date marked on the side of the smoke alarm.*

To protect our environment, batteries shall be disposed in a safe and environmentally sound manner at your local recycle center.

Do not put the smoke alarm into a fire

The smoke alarm should be disposed in a safe and environmentally sound manner at your local recycle centre. Contact your local authority for further advice.

Troubleshooting

If	Try this
Nothing happens when I press the smoke alarm test button.	<ul style="list-style-type: none">■ Make sure the unit is installed properly, see 'Installation'. To turn it on, fit the smoke alarm to the bracket by turning it clockwise until it snaps into place.■ If the smoke alarm is still not functioning properly or if it is older than 10 years, it needs to be replaced. Check the date on the 'replace by' label.
The smoke alarm beeps when I press the test button, but the Visit receiver is not responding.	<ul style="list-style-type: none">■ Check the receiver batteries and connections.■ Move the receiver closer to the smoke alarm to make sure it's within radio range.
The Visit receiver is activated for no apparent reason.	<ul style="list-style-type: none">■ Check for fumes, steam, etc. from the kitchen or bathroom that can cause a nuisance alarm. Press the test button to silence the alarm temporarily. The status LED blinks every 8 s to confirm. If the problem persists, it will sound the alarm after 10 minutes.
The smoke alarm chirps and blinks in red every 40 s.	<ul style="list-style-type: none">■ The smoke alarm battery is starting to run out. Replace the unit.
The smoke alarm chirps every 40 s. but it doesn't blink in red.	<ul style="list-style-type: none">■ Check for any sign of contamination such as cobwebs or dust. If necessary, clean the unit, see Cleaning your smoke alarm.■ If the problem persists, the smoke alarm is defective and needs to be replaced.
The interconnected smoke alarm blinks and chirps once every 3 h.	<ul style="list-style-type: none">■ The smoke alarm battery is starting to run out. Replace the unit.

Technical specifications

Sensor type	Photoelectric
Smoke sensitivity	0.09 – 0.15 dB/m
Alarm volume	> 85 dB(A) @ 3 meters
Alarm sound pattern	ISO 8201
Compliance	AS3786:2014
Battery type	Built-in CR17450 non-replaceable lithium battery
Operation time	> 10 years
Power consumption	Active: < 70 mA, Idle position: < 11 uA
Operating temperature	0 °C – 45 °C
Relative humidity	< 93 %, non-condensing
Low voltage thresholds	DC 2.65 V ±4 %
Silence mode	10 minutes ±10 %
Interconnection	Up to 40 devices
Radio frequency	433.42 MHz
Radio coverage	More than 100 m, free field
SRD class	2
Wireless response time	< 30 s
Dimensions	114 mm (4.5") × 37.9 mm (1.5")

Service and support

If your smoke alarm fails to work after you have read and followed all the Instructions, please contact the local distributor of Bellman & Symfon. Put the smoke alarm in a padded box with the battery disconnected and state the nature of the fault, together with the purchasing proof, and please return to your country's address as below:

Word of Mouth Technology
PO Box 1001, Croydon, Vic 3136,
Australia
Tel: 03 9723 0660
E-mail: info@wom.com.au

Reid Technology
Unit D, 15 Saturn Place, North Harbour,
Auckland 0632, New Zealand
Tel: 09 489 8100
E-mail: sales@reidtechnology.co.nz

Warranty conditions

Bellman & Symfon guarantees this smoke alarm (excluding the battery) for two (2) years from date of purchase against any defects that are due to faulty materials or workmanship.

This guarantee only applies to normal conditions of use and service, and does not include damage resulting from accident, neglect, misuse, unauthorized dismantling, or contamination howsoever caused. This guarantee excludes incidental and consequential damage. Further the warranty does not cover Acts of God, such as fire, flood, hurricanes and tornadoes. If this smoke alarm should become defective within the guarantee period, it must be returned to Bellman & Symfon, with proof of purchase, carefully packaged, with the problem clearly stated. We shall at our discretion repair or replace the faulty unit.

Bellman & Symfon shall not be liable for any incidental or consequential damages caused by the breach of any express or implied warranty. Any implied warranty of merchantability or fitness for purposes is limited to the duration of the above warranty period. This warranty gives you specific legal rights and you may also have other rights that vary from state to state. Some states or jurisdictions do not allow the limitation or exclusion of incidental or consequential damages, or limitations on how long an implied warranty last so the above limitation may not apply to you.

Do not interfere with the smoke alarm or attempt to tamper with it. This will invalidate the guarantee, but more importantly may expose the user to shock or fire hazards. This guarantee is in addition to your statutory rights as a consumer. Bellman & Symfon makes no warranty, expressed or implied, written or oral, including that of merchantability or fitness for any particular purpose, with respect to the battery. The above warranty may not be altered except in writing signed by both parties hereto.

Bellman & Symfon Group AB
Södra Långebergsgatan 30
436 32 Askim, Sweden
Tel: +46 31 68 28 20
E-mail: info@bellman.com
© and TM 2020, Bellman & Symfon AB

For Konnekt customer
Level 1, 451 Nepean Hwy
Chelsea VIC 3196
Australia
Tel: 1300 851 823
Contact Konnekt

konnekt.com.au

DESIGN FOR EARS™