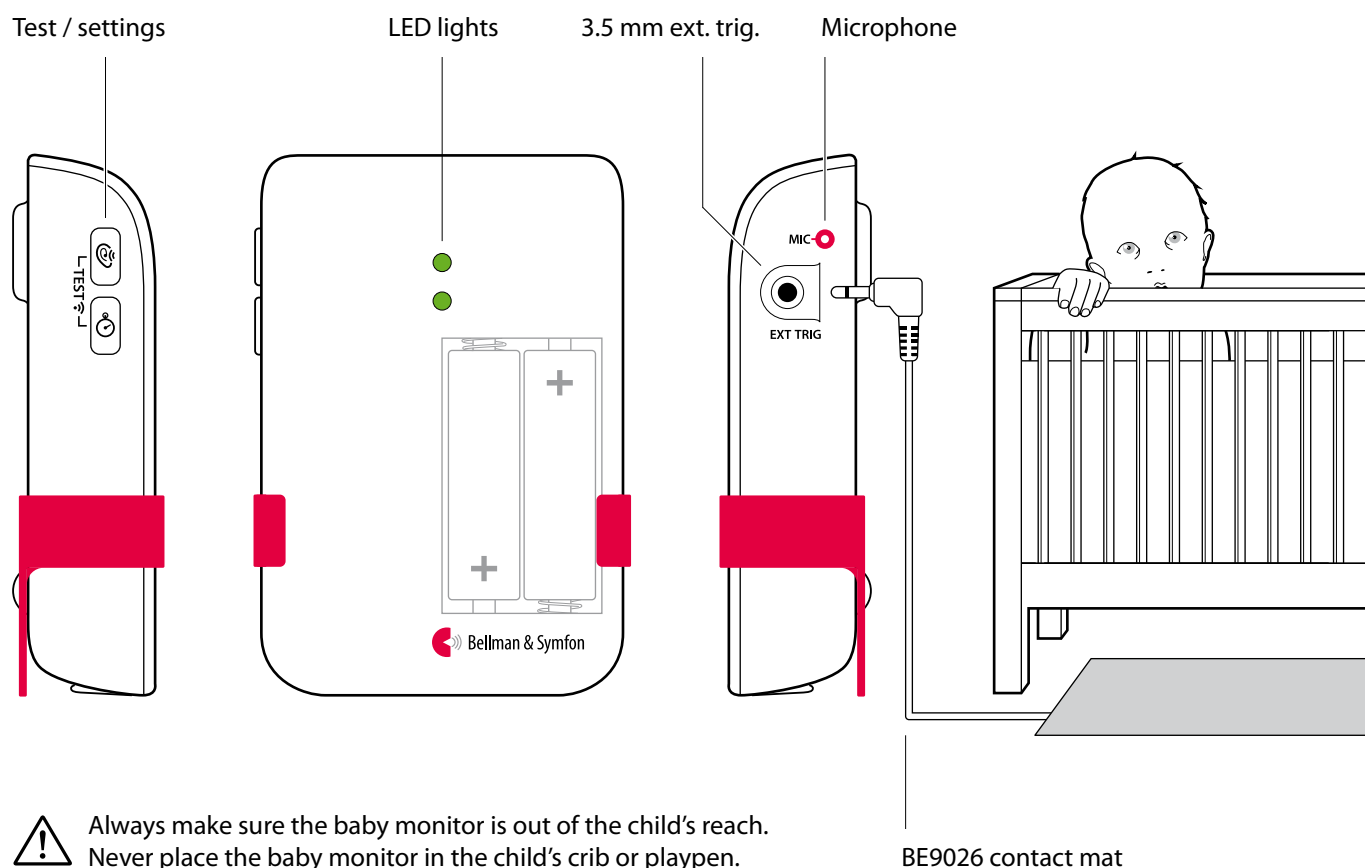




# Visit baby monitor

## Buttons and connections



Always make sure the baby monitor is out of the child's reach.  
Never place the baby monitor in the child's crib or playpen.

BE9026 contact mat

## Technical specifications

### In the box

- BE1491 Visit baby monitor
- 2 × 1.5 V AA alkaline batteries
- Pre-mounted table stand
- Screw and wall plug

### Power and battery

- Battery power  
2 × 1.5 V AA lithium or alkaline  
type batteries
- Power consumption  
Active < 70 mA  
Idle position < 400 µA

### Dimensions and weight

- Height: 100 mm, 4.0"
- Width: 65 mm, 2.6"
- Depth: 27 mm, 1.1"
- Weight: 120 g, 4.2 oz. incl. batteries

### Activation

- The internal mic. and test buttons
- The contact mat accessory

### Settings

- Sensitivity  
65 dB, 75 dB, 85 dB
- Delay  
30 sec, 10 sec, 1 sec

### Environment

- For indoor use only  
Operating temperature  
15° to 35° C, 59° to 95° F
- Relative humidity  
5% to 95%, non-condensing

### Frequency and coverage

- Frequency: 314.91 MHz, 433.92 MHz  
or 868.30 MHz, depending on region
- Coverage: 50 - 250 m, 55 - 273 yd.  
depending on the radio frequency  
and the building's characteristics

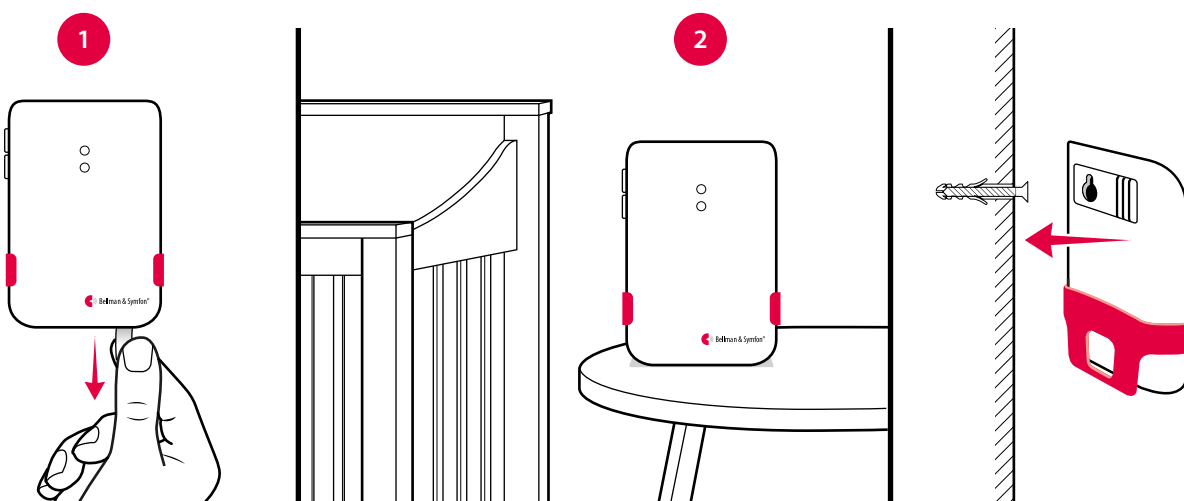
### Accessories

- BE9026 Contact mat  
Alerts you if your baby leaves the bed

# Visit baby monitor

## Setting up the baby monitor

- 1 Remove the battery pull tab to start the unit.  
(You can press and hold both test buttons for 3 seconds to turn it on/off.)
- 2 Place the baby monitor on the bedside table or mount it on the wall using the supplied screw and plug.  
The recommended distance is 0.5 – 2 m, always out of reach from the child.

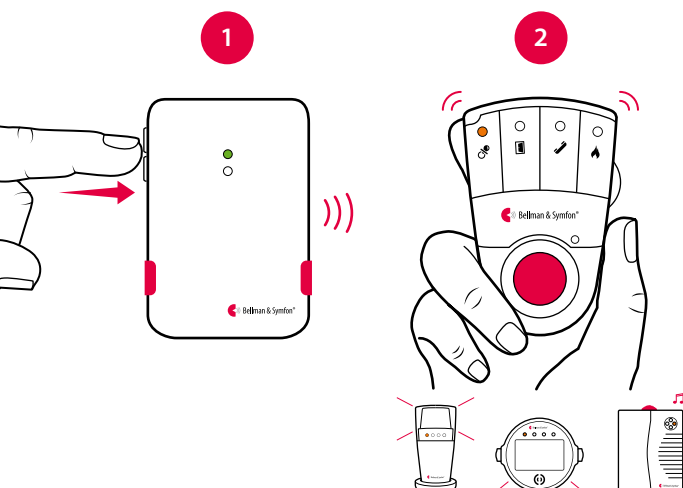


## Testing the connection

### Using the test button

- 1 Press both test buttons simultaneously on the baby monitor. The top LED lights up in green to show that a radio signal is being transmitted.
- 2 The orange Visit LED on the receiver lights up to show that the signal was received. In addition, it starts to sound, flash or vibrate depending on the receiver.

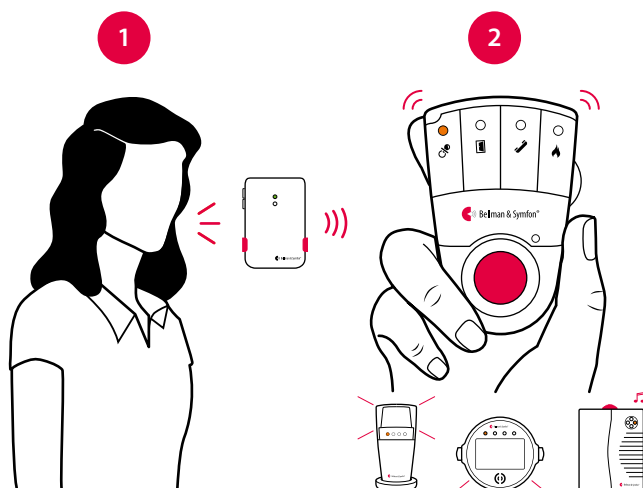
**Note:** If you have changed the signal pattern, it will react in accordance with the table on the following spread.



### Using your voice

- 1 Stand by the baby monitor and make some noise. The top LED lights up in green to show that the sound was detected.
- 2 The orange Visit LED on the receiver lights up to show that the radio signal was received. In addition, it starts to sound, flash or vibrate depending on the receiver.

**Note:** If you have changed the signal pattern, it will react in accordance with the table on the following spread.




# Visit baby monitor

## Adjusting the settings


The buttons for sensitivity and delay are located on the left side of the baby monitor. When you press the button, the corresponding LED colour shows the current setting. Then press repeatedly to adjust the setting.

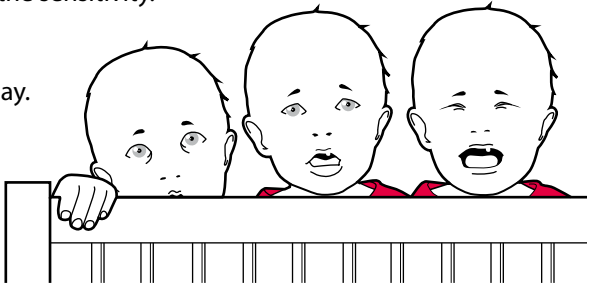
- If the baby monitor is not activated when the baby cries – increase the sensitivity.
- If the baby monitor is activated too easily – reduce the sensitivity.
- If the baby monitor is activated too early or too late – adjust the delay.

### Sensitivity settings

	65 dB	Red
	75 dB	Orange
	85 dB	Green

### Delay settings

	30 s	Red
	10 s	Orange
	1 s	Green



## Default signal pattern

When the baby monitor is activated by the baby's voice or the contact mat, the following happens:

- 1 The LED on the baby monitor lights up in green to show that it is signalling the receiver.
- 2 The Visit LED on the receiver lights up in orange and it starts to sound, flash or vibrate with a certain pace, called signal pattern. The baby monitor and the contact mat accessory determine the signal pattern. The default is as follows:

### Baby monitor

### Receiver signal pattern

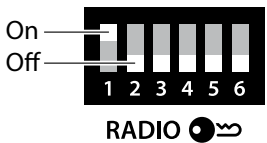
Source	LED	LED	Sound	Vibration	Flash
▪ Baby voice	Green, top	Orange light	Baby melody	Fast 	Yes
▪ Contact mat	Green, bottom	Green light	1 × door chime, low	Slow 	Yes

## Changing the radio key

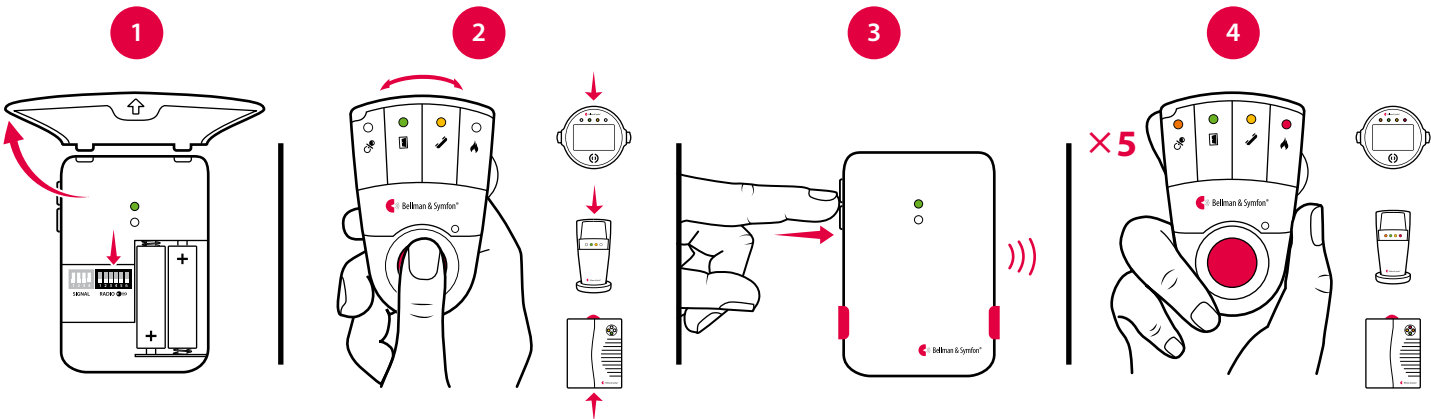
If your Visit system is activated for no reason, there is probably a nearby system that triggers yours. In order to avoid radio interference, you need to change the radio key on all units. The radio key switches are located under the monitor cover.

### Here is how you change the radio key:

- 1 Carefully remove the table stand and open the front cover on the baby monitor. Move any radio key switch to the up (on position) to change the radio key.
- 2 Press and hold the test/function button on the receiver until the green and yellow Visit LEDs blink alternately. Release the button.
- 3 Press both test buttons simultaneously on the baby monitor within 30 s to send the new radio key.
- 4 All Visit LEDs on the receiver blink 5 times to show that the radio key has been changed. It then returns to normal mode.




**Note:** All Visit units must be set to the same radio key in order to operate as a group.



# Visit baby monitor

## Troubleshooting

If	Try this
The LEDs blink in orange every minute	<ul style="list-style-type: none"><li>▪ Replace the batteries. Only use 1.5 V AA (LR6) lithium or alkaline batteries.</li></ul>
The baby monitor LED lights up in green but the receiver is not activated	<ul style="list-style-type: none"><li>▪ Check the baby monitor batteries and the receiver batteries and connections.</li><li>▪ Move the receiver closer to the baby monitor to make sure it's within range.</li><li>▪ Check that the units are set to the same radio key, see <b>Changing the radio key</b>.</li></ul>
The baby monitor LED doesn't light up even though the baby is crying	<ul style="list-style-type: none"><li>▪ Move the baby monitor closer to the baby or increase the microphone sensitivity, see <b>Adjusting the settings</b>.</li><li>▪  <b>Note:</b> Always make sure the baby monitor is out of the child's reach. Never place the baby monitor in the child's crib or playpen.</li></ul>
The baby monitor is activated too easily	<ul style="list-style-type: none"><li>▪ Reduce the sensitivity or move the baby monitor further away from the crib, see <b>Adjusting the settings</b>.</li></ul>
The baby monitor is activated too early	<ul style="list-style-type: none"><li>▪ Increase the delay. For more information, see <b>Adjusting the settings</b>.</li></ul>
The baby monitor is activated too late	<ul style="list-style-type: none"><li>▪ Reduce the delay, see <b>Adjusting the settings</b>.</li></ul>
The receiver is activated for no apparent reason	<ul style="list-style-type: none"><li>▪ There is probably another Visit system installed nearby that triggers your system. Change the radio key on all units, see <b>Changing the radio key</b>.</li></ul>